

Impossible...

OILY and WET CONCRETE FLOORS



POINT1 LOWEST COST!

The most expensive cost component is labor, and the most expensive process is the preparation of the concrete surface to eliminate oils, moisture and debris.

4Ever Concrete Floor Paint was developed so that "ANYONE CAN DO."

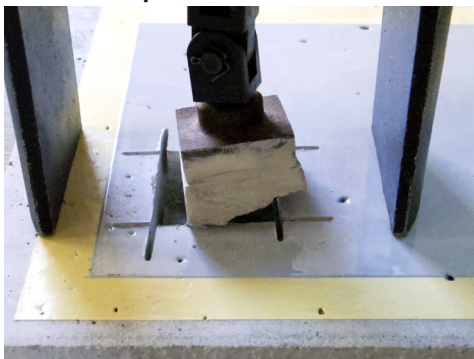
Minimum surface preparation. **Only 1 coat. It's LOWEST COST !**

POINT2 Incredibly strong adhesion and durability.

Somay-Q's proprietary adhesion technology ensures incredibly strong adhesion that will not delaminate for years. Just one coating process only. Repels black tire marks.

Lowest cost solution by far.

Adhesion pull test



4Ever Concrete Floor Paint's adhesion was so strong that it cracked the concrete. The adhesion rating was 4N/m².

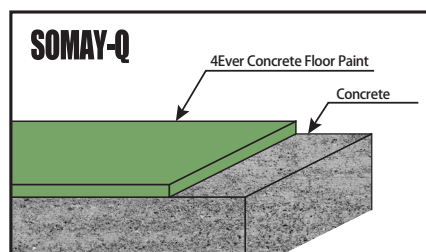
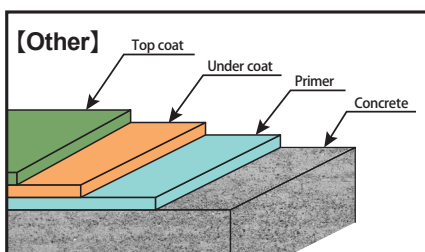
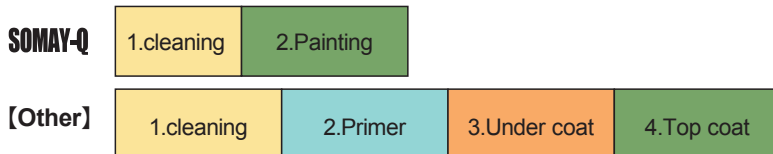
Adhesion delamination test



4Ever Concrete Floor Paint was painted over an oil-soaked substrate. Then a screwdriver was used to try to scratch off the coating. The competitor's coating delaminated easily. 4Ever Concrete Floor Paint did not delaminate whatsoever.

POINT3 Apply just 1 coat

Process



4Ever Concrete Floor Paint eliminated the difficult and time consuming processes.

It's LOWEST COST!



POINT4 *Paint directly over oil soaked and even moist concrete*

Somay-Q's proprietary adhesion technology forces oil and moisture out of the concrete and up to the surface of the coating.



Paint directly over oily floors !

Caution : Oily particulates and puddles of water must be removed before painting 4Ever Concrete Floor Paint.

POINT5 *Paint directly over oil soaked and even moist concrete*



4Ever Concrete Floor Coating GDR

- Apply just one coat only.
- Incredible adhesion. Will not delaminate.
- No prep.
- Unbelievable

Practical Coverage: 30 to 35 m²
 Dry time: 8 hours
 Volume: 10kg (Base/Hardener 5kg each)
 Mix ratio: 1 : 1 (by weight)

Apply on dry concrete floor or concrete floor with old paint film.

Quick drying. Can walk on paint after 8 hours. (@20°C)

Mix ratio 1:1 (by weight)

Made possible by SOMAY-Q's proprietary adhesion and nano technologies.



4Ever Concrete Floor Coating FOP

Practical Coverage: 30 to 35 m²
 Dry time: 8 hours
 Volume: 10kg (Base/Hardener 5kg each)
 Mix ratio: 1 : 1 (by weight)

Apply directly on oily concrete floor or concrete floor with old paint film.

Quick drying. Can walk on paint after 6 hours. (@20°C)

Mix ratio 1:1 (by weight)

Made possible by SOMAY-Q's proprietary adhesion and nano technologies.



4Ever Concrete Floor Coating FWP

Practical Coverage: 30 to 35 m²
 Dry time: 8 hours
 Volume: 10kg (Base/Hardener 5kg each)
 Mix ratio: 1 : 1 (by weight)

Apply directly on water-soaked concrete floor with old paint film.

Water base. Quick drying. Can walk on paint after 8 hours. (@20°C)

Mix ratio 1:1 (by weight)

Made possible by SOMAY-Q's proprietary adhesion and nano technologies.

■ Color sample

Name	Green	Light Green	Gray	Light Gray	Sky Blue	Orange	Yellow	Ivory	Brown	White
Japan Paint Manufacturers Association No	42-50L	39-60L	N-60	N-75	69-50T	12-50V	19-75X	22-80H	09-40L	N-95

Somay-Q Technology Corporation

5971, Moto kurihashi, Goka-machi, Sashima-gun, Ibaraki, 306-0313, Japan

TEL.+81-280-80-0005 FAX.+81-280-80-0006

E-mail : support@somayq.com HP : http://www.somayq.com/English/